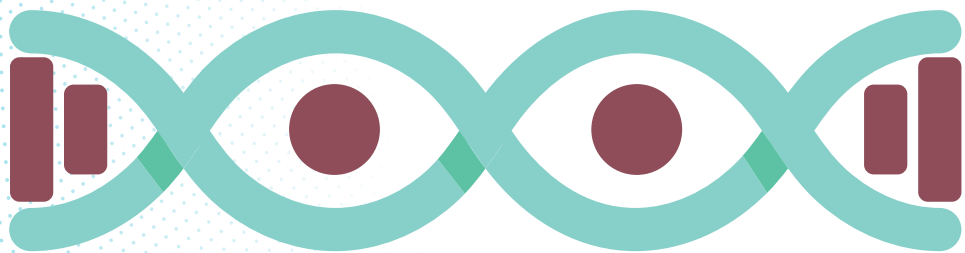




Realeyes



BIOLOGY & GENETICS *OF THE EYE*



High School Curriculum

"This work is funded either in whole or in part by a grant awarded by the Ohio Department of Health Bureau of Child and Family Health, Save our Sight Program."

Activity - EYE SIZE

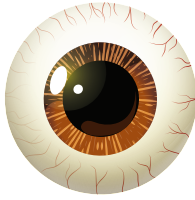
What is the actual size of the human eye?

A



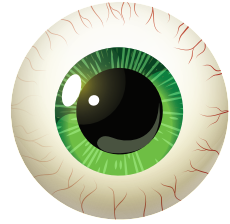
$\frac{3}{4}$ inch

B



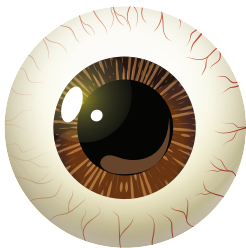
1 inch

C



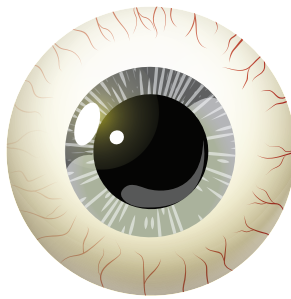
$1\frac{1}{8}$ inch

D



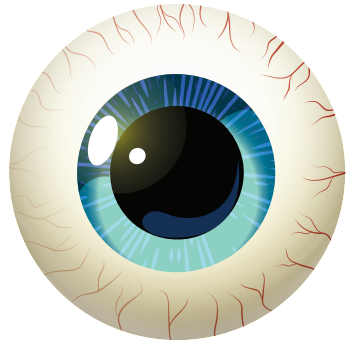
$1\frac{1}{4}$ inch

E



$1\frac{1}{2}$ inch

F



$1\frac{3}{4}$ inch



Activity - FIND YOUR BLIND SPOT



Step 1: Hold the paper with your left hand at arms length and close your right eye.

Step 2: Look directly at the X. Even though you're looking at the X, you should be able to see the dot out of the corner of your eye.

Step 3: Slowly move the paper closer to you. Remember to keep looking at the X. At a certain point, the dot will disappear out of your line of sight.

Which of the two boxes is darker?

TOP or BOTTOM

